

Port Community Church

Worship Service

February 15, 2026

* Please listen ahead to the music to get vibe and we'll go from there!

Great Are You Lord (Opening)

And Can It Be

Amazing Love – You Are My King

Jesus Loves Me (Tomlin)

Power of Your Love (Closing)

Great Are You Lord


[IN -V-C-V-C-B3(Bridge)-C(*)-B]

Words and Music by
Jason Ingram, Leslie Jordan
and David Leonard

♩ = 144

INTRO

F Am⁷ G^{sus} 1. 2.



You give


1st - Ladies

2nd - Men

3rd - All


VERSE

6 F Am⁷ G^{sus} F



life. You are love. You bring light to the dark - ness. You give hope. You re -

11 Am⁷ G^{sus} F Am⁷ G^{sus}




-store ev - 'ry heart that is bro - ken. ____ And great are You, _ Lord.



CHORUS


17 F Am⁷ G^{sus}



It's Your breath in our lungs, so we pour out our praise, we

Last time to Coda ⊕

21 F Am⁷



* **ENDING & slow it down**

pour out our praise. It's Your breath in our lungs, so we

CCLI Song # 6460220

© 2012 Open Hands Music | So Essential Tunes | Integrity's Praise! Music | Little Way Creative
For use solely with the SongSelect® Terms of Use. All rights reserved. www.ccli.com
CCLI License # 692802

1. **INSTRUMENTAL 1**
 24 G^{sus} F Am^7 G^{sus}
 pour out our praise to You on - ly. You give

2, 4. **INSTRUMENTAL 2**
 30 G^{sus} D.S. G^{sus} C
 pour out our praise to You on - ly. It's Your pour out our praise to You on - ly.

35 C^{sus} F^2 C
 And

BRIDGE
 42 C **ENDING.... SLOW DOWN & RESOLVE** C^{sus}
 all the earth will shout Your praise. Our hearts will cry, these bones will sing, -

46 F^2 1, 2. C **BRIDGE 3X - BUILD** 3. C **ENDING *Chorus** D.S. al Coda
 "Great are You, _____ Lord!" _____ And Lord!" _____ It's Your

52 G^{sus} **ENDING** F Am^7
 pour out our praise to You on - ly.

Coda

And Can It Be

Words by
Charles Wesley


[V1, V3, V4, V5]

Music by
Thomas Campbell

♩ = 110 VERSE

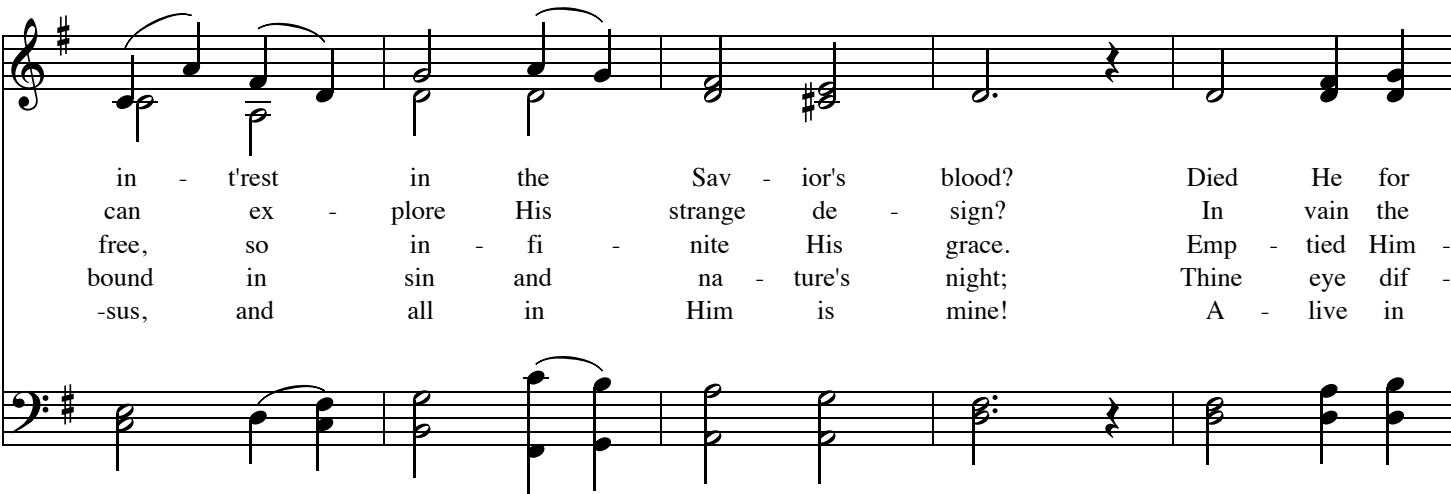
(Optional chords in parentheses)

G C D⁷ G



1. And can it be that I should gain an
2. 'Tis mys - t'ry all th'Im - mor - tal dies! Who
3. He left His Fa - ther's throne a - bove; So
4. Long my im - pris - oned spir - it lay fast
5. No con - dem - na - tion now I dread; Je -

5 C D G/B (D/F#) (G) D/A A⁷ D D



in - t'rest in the Sav - ior's blood? Died He for
can ex - plore His strange de - sign? In vain the
free, so in - fi - nite His grace. Emp - tied Him -
bound in sin and na - ture's night; Thine eye dif -
-sus, and all in Him is mine! A - live in

10 G/D D G/B G D (G/B) C G/B C

me, who caused His pain? For me, who Him to
first - born ser - aph tries to sound the depths of
-self of all but love, and bled for Ad - am's
-fused a quick - 'ning ray, I woke, the dun - geon
Him, my liv - ing Head, and clothed in right - eous -

15 G/D D⁷ G G D G/B (D/A) (G) C A⁷/C[#]

death pur - sued? A - maz - ing love! How can it
love di - vine. 'Tis mer - cy all! Let earth a -
help - less race. 'Tis mer - cy all, im - mense and
flamed with light. My chains fell off; My heart was
-ness di - vine; Bold I ap - proach th'e - ter - nal

20 D G C D

be that Thou, my God, shouldst die for
-dore; Let an - gel minds in - quire no
free, for, O my God, it found out
free. I rose, went forth and fol - lowed
throne and claim the crown, through Christ, my

24

G G D D⁷

me? A - maz - ing love! how can it
 more. 'Tis mer - cy all! Let earth a -
 me. 'Tis mer - cy all, im - mense and
 Thee. My chains fell off; My heart was
 own. Bold I ap - proach th'e - ter - nal
 (A - maz - ing love) (How

28

G C G/B C G/D D⁷ G

be that Thou, my God, shouldst die for me?
 -dore; Let an - gel minds in - quire no more.
 free, for, O my God, it found out me.
 free. I rose, went forth and fol - lowed Thee.
 throne and claim the crown, through Christ, my own.
 can it be) (that Thou, my God)

You Are My King (Amazing Love)

Words and Music by
Billy J. Foote

[V-C-V-C-B-C-ENDING]

♩ = 70

VERSE

D/F#

G²

A^{sus}

A

D/F#

G²

INTRO

I'm for-giv - en be - cause You were for-sak - en. I'm ac-cept-ed;

4

A^{sus}

A

D/F#

G²

You were con-demned. I'm a - live and well, Your

6

A^{sus}

A

G²

A

D

Spir - it is with-in me be - cause You died and rose a-gain.

CCLI Song # 2456623

© 1996 worshiptogether.com songs

For use solely with the SongSelect® Terms of Use. All rights reserved. www.ccli.com

CCLI License # 692802

CHORUS

9 D G D

A-maz-ing love, how can it be that You, my King, would die for me?

12 A^{sus} A G/A D G

A-maz - ing love, I know it's true;

15 D

Last time to Coda \oplus 1. A^{sus} A G/A **GO BACK TO V1** 2. A^{sus} A

it's my joy to hon - or You. In all I

BRIDGE

18 G A D D

do I hon - or You. You are my

22

King, You are my King. Je-sus, You are my

26

King. Je - sus, You are my King. D.C. al Coda

BACK TO CHORUS
PG. 2

29 Φ Coda
A^{sus} A G A D

In all I do I hon - or You.

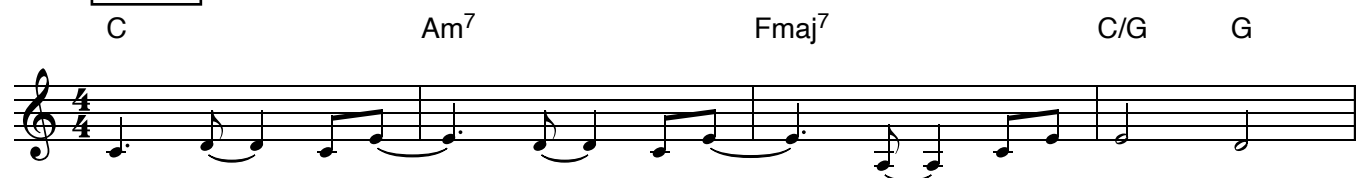
Jesus Loves Me

[V1-PC-C-V2-PC-C-B-C2-ENDING]

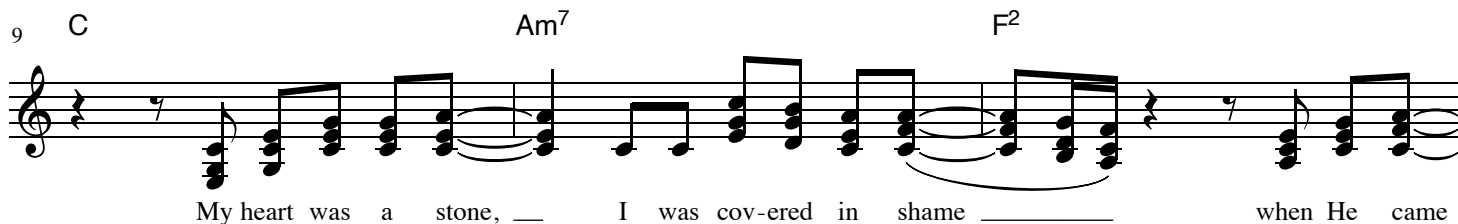
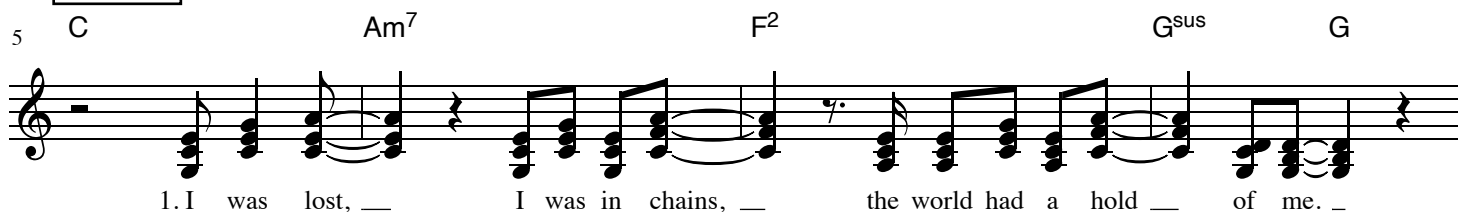
Words and Music by
Chris Tomlin, Reuben Morgan
and Ben Glover

♩=82

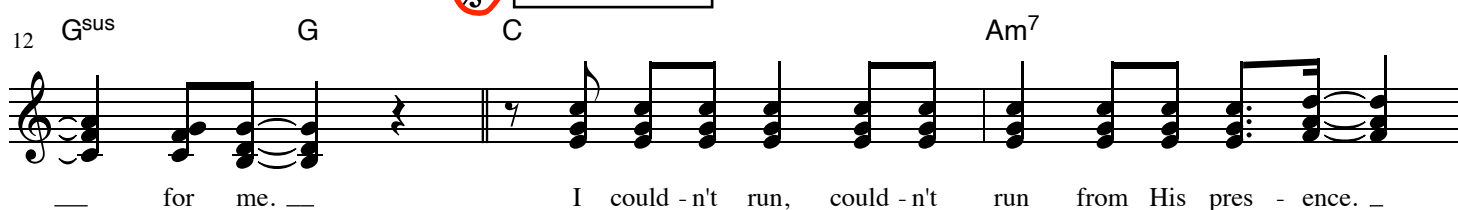
INTRO



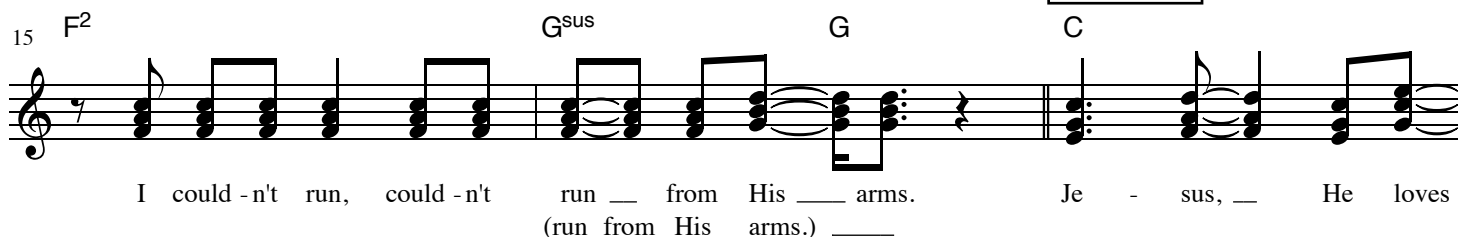
VERSE 1



PRE-CHORUS



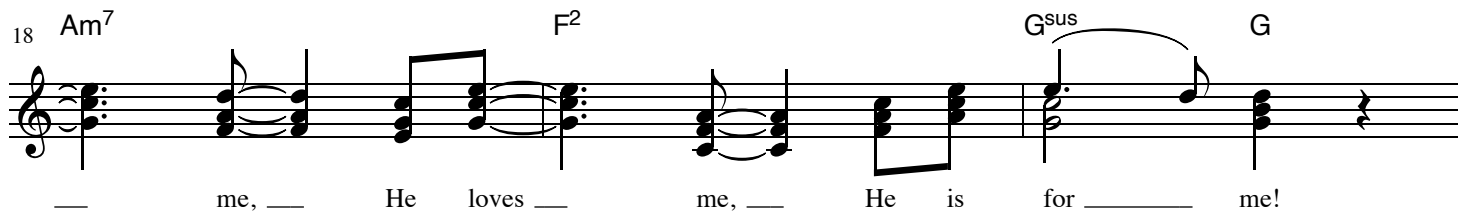
CHORUS 1



CCLI Song # 7028829

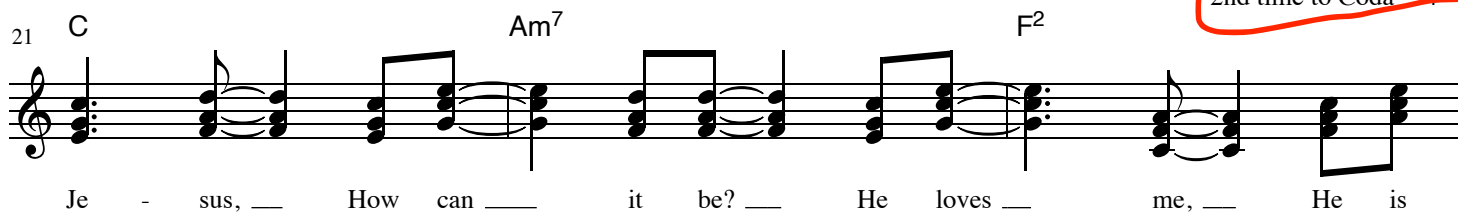
© 2014 9t One Songs | Ariose Music | Hillsong Music Publishing Australia | S. D. G. Publishing | sixsteps Songs | Worship Together Music
For use solely with the SongSelect® Terms of Use. All rights reserved. www.ccli.com
CCLI License # 692802

18 Am⁷ F² G^{sus} G



me, He loves me, He is for me!

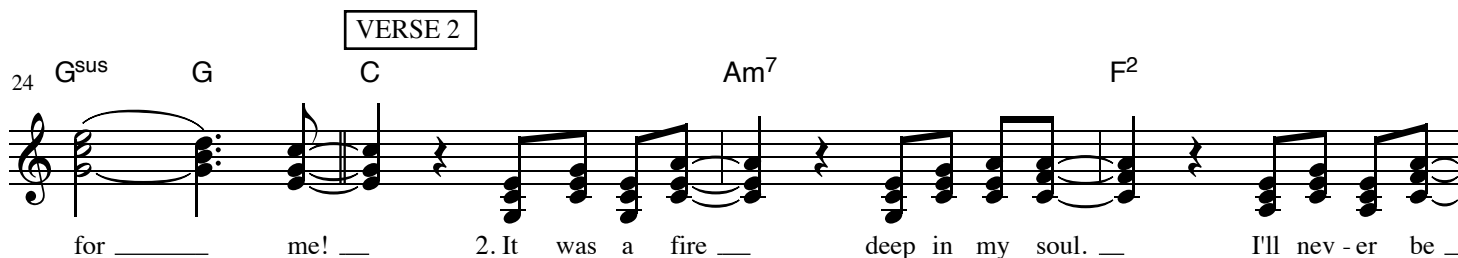
21 C Am⁷ F²



Je - sus, How can it be? He loves me, He is

2nd time to Coda

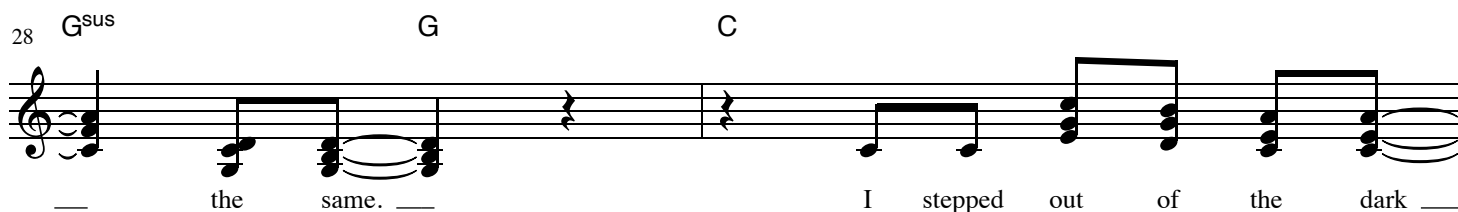
24 G^{sus} G C Am⁷ F²



for me! 2. It was a fire deep in my soul. I'll nev - er be

VERSE 2

28 G^{sus} G C



the same. I stepped out of the dark

30 Am⁷ F² G^{sus} G D.S. al Coda



and in - to the light when He called my name.

Coda

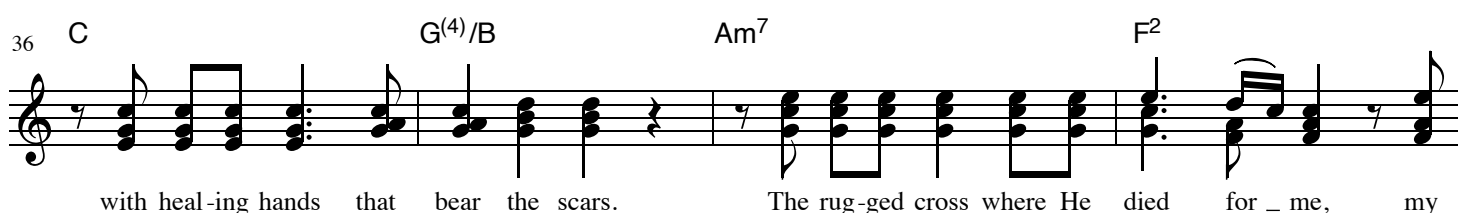
BRIDGE

33 G^{sus} G Am⁷ F²



for me! He holds the stars, and He holds my heart

36 C G^{(4)/B} Am⁷ F²



with heal - ing hands that bear the scars. The rug - ged cross where He died for me, my

40 C G⁽⁴⁾ C CHORUS 2

on - ly ___ hope, my ev - 'ry-thing! Je - sus, ___ He loves .

44 Am⁷ F² G^{sus} G C

___ me. ___ He loves ___ me, oh! Je - sus, ___ how can .

48 Am⁷ F² G^{sus} G C ENDING

___ it be? ___ He loves ___ me, ___ He is for ___ me! ___ He loves .

52 Am⁷ F² G^{sus} G C

___ me, He loves _ me. He loves _ me, He is for ___ me. My God, .

56 Am⁷ F² G^{sus} G C

___ it's a - maz - ing, oh. ___ Je - sus loves ___ me.

The Power Of Your Love

[V1-C-V2-C-Cb-ENDING]

Words and Music by
Geoff Bullock

♩ = 85

VERSE

G

D/F#

Em⁷

Bm⁷

1. Lord I come to You, let my heart be changed, re-newed;
2. Lord un-veil my eyes, let me see You face to face;

4

Em⁷

D

C

D⁷sus

D⁷

Em⁷

Flow-ing from the grace that I found in You.
The know-ledge of Your love, as You live, in me.

8

D⁷sus

D⁷

G

D/F#

Em⁷

And Lord I've come to know the weak-ness - es I
Lord re - new my mind as Your will un -

CCLI Song # 917491

© 1992 Geoff Bullock Music

For use solely with the SongSelect® Terms of Use. All rights reserved. www.ccli.com
CCLI License # 692802

11 Bm⁷ Em⁷ D C D^{sus} D⁷

see in me will be stripped a - way by the pow'r of Your love.
 -folds in my life, in liv - ing ev - 'ry day by the pow'r of Your love.

15 C/G G D/F# Em⁷ D C C/E D

CHORUS

Hold me close, let Your love sur -

19 C/G D G D/F# Em⁷ D C C/E D D⁷

-round me, bring me near, draw me to Your

23 G Am⁷ G/B F/G G⁷ C C/E D

side. And as I wait, I'll rise up like the

ENDING

27 C/G G D/F# Em⁷ D

ea - gle, and I will soar with You, Your spir - it leads me

30 C C/D C/G D 1. G D^{sus} D⁷ 2. G

on in the pow'r of Your love.

Detailed description: The image shows a musical score for a song. The first system (measures 27-30) is in G major, 4/4 time. Measure 27 has a C/G chord and the lyrics 'ea -'. Measure 28 has a G chord and the lyrics 'gle,'. Measure 29 has a D/F# chord and the lyrics 'and I will soar with You,'. Measure 30 has an Em⁷ chord and the lyrics 'Your spir - it leads me'. A red bracket labeled 'ENDING' spans measures 28-30. The second system (measures 30-33) also has a key signature of one sharp (F#) and a 4/4 time signature. Measure 30 has a C chord and the lyrics 'on in the pow'r of Your love.'. Measure 31 has a C/D chord. Measure 32 has a C/G chord. Measure 33 has a D chord. There is a first ending (measures 31-32) and a second ending (measures 33-34). The first ending is marked with a '1.' and has a G chord, a D^{sus} chord, and a D⁷ chord. The second ending is marked with a '2.' and has a G chord. A red oval is drawn around the first ending.